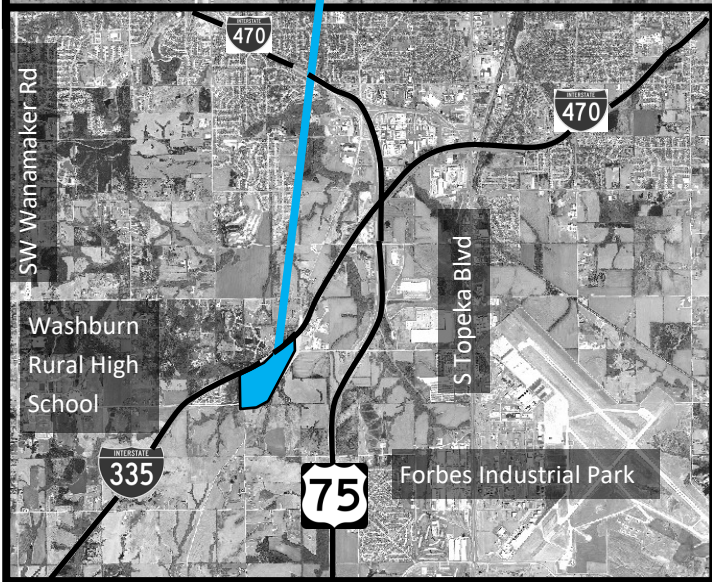
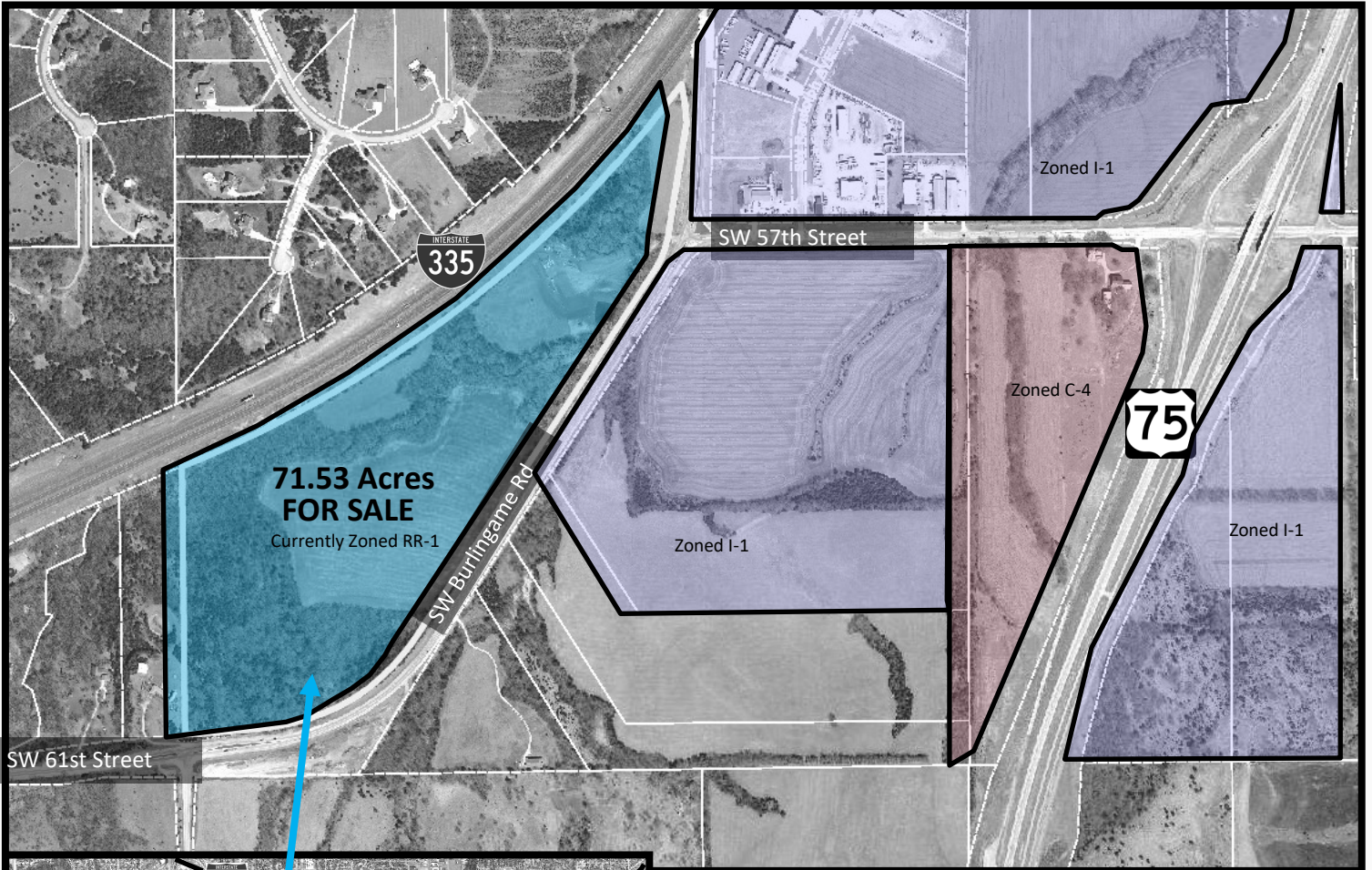


DEVELOPMENT LAND FOR SALE | 71.53+/- ACRES

Burlingame Road & SW 57th Street, Topeka, KS



- Development Opportunity: Commercial or Residential
- Excellent exposure from I-335 and access from US Hwy 75
- Variety of meadows, trees, flat and rolling terrain
- Current Zoning is RR1. Adjacent to I-1 and C-4 zoning
- Owner prefers to sell entire property 71.53 acres

■ **PRICE REDUCED**

Sale Price: \$289,000 or \$4,040/acre or \$0.09/sq ft

Ken Schmanke | 785.554.8140 | ken.schmanke@k1realtyllc.com

VALUE ADDED COMMERCIAL REAL ESTATE SERVICES SINCE 1988

The information contained herein has been obtained from sources believed reliable. While K1 Realty llc does not doubt its accuracy, some of the information may need to be verified. K1 Realty llc makes no guarantee and warranty with regard to the property or this information.

